

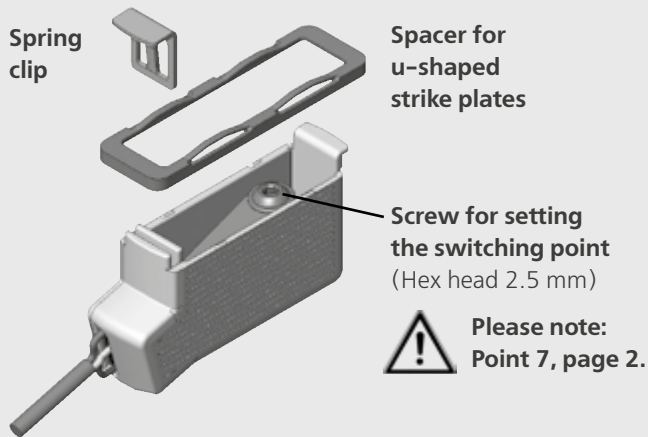
Deadbolt switching contact VRFZ126VDS / VRFZ126VDS10

Installation instructions

DESCRIPTION

Deadbolt switching contact (strike plate contact) for monitoring whether door is locked or unlocked, e.g. for integration into an alarm or building management system.

- Can be used with almost all FUHR **multisafe** latch & dead-bolt strike plates and one-piece strike plates
- With micro switch – dust and splash-proof
- With spacer for use with u-shaped strike plates



TECHNICAL DETAILS

- Deadbolt switching contact (strike plate contact) with micro switch IP67
- VdS class C
- Working temperature from -40°C to $+85^{\circ}\text{C}$
- Connecting cable 3-core, VRFZ126VDS cable length 6 meter VRFZ126VDS10 cable length 10 meter
- Switching current 1A at 30V DC
- Connection:

not actuated



actuated



Deadbolt switching contact VRFZ126VDS / VRFZ126VDS10

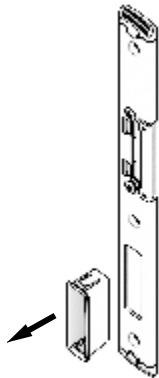
Installation instructions

ROUTING DIMENSIONS

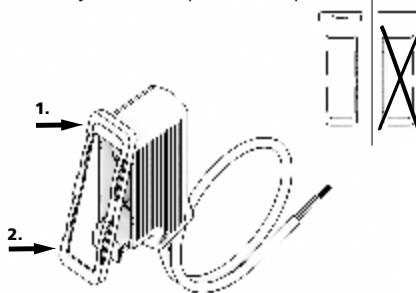
For the use of the deadbolt switching contact or a FUHR electric strike, no further milling that deviates from the standard is required.

MOUNTING STEPS

1. Remove dust cap



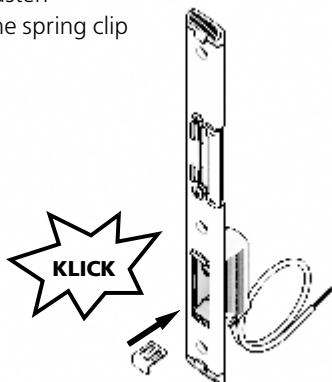
2. Install spacer (only on u-shaped strike plates)



3. Connect the deadbolt switching contact



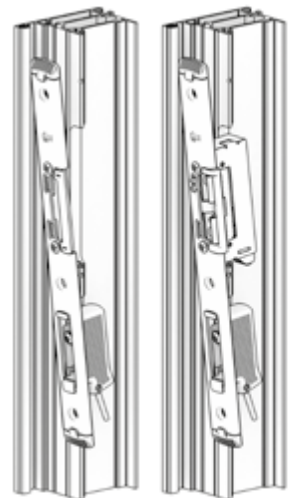
4. Fasten the spring clip



5. Completely assembled strike plate



6. Fit the strike plate into the profile



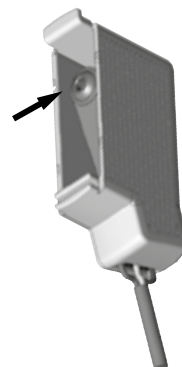
7. Depending on the deadbolt length, partially unscrew or completely remove the screw for setting the switching point (Allen key SW 2.5).



ATTENTION!

When used with panic locks from the following series, be sure to remove the screw:

- autosafe 833P/835P
- autotronic 834P/836P
- multisafe 872



FUHR

CARL FUHR GmbH & Co. KG
Carl-Fuhr-Straße 12
D-42579 Heiligenhaus
Tel.: +49 2056 592-0
www.fuhr.de · info@fuhr.de